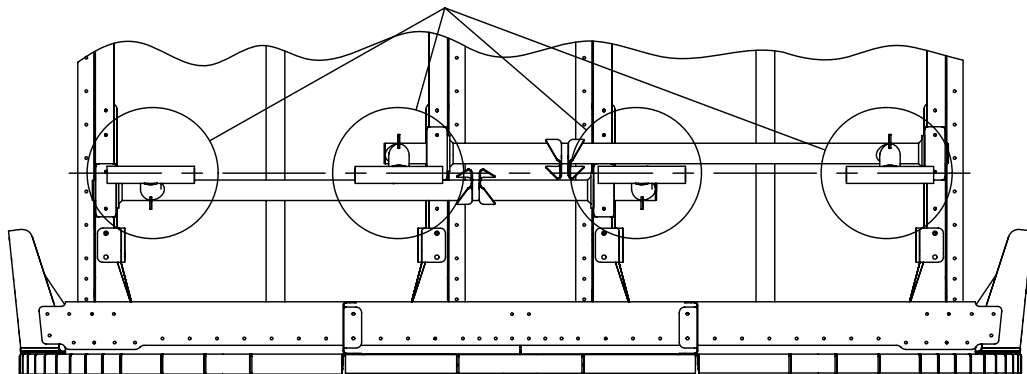


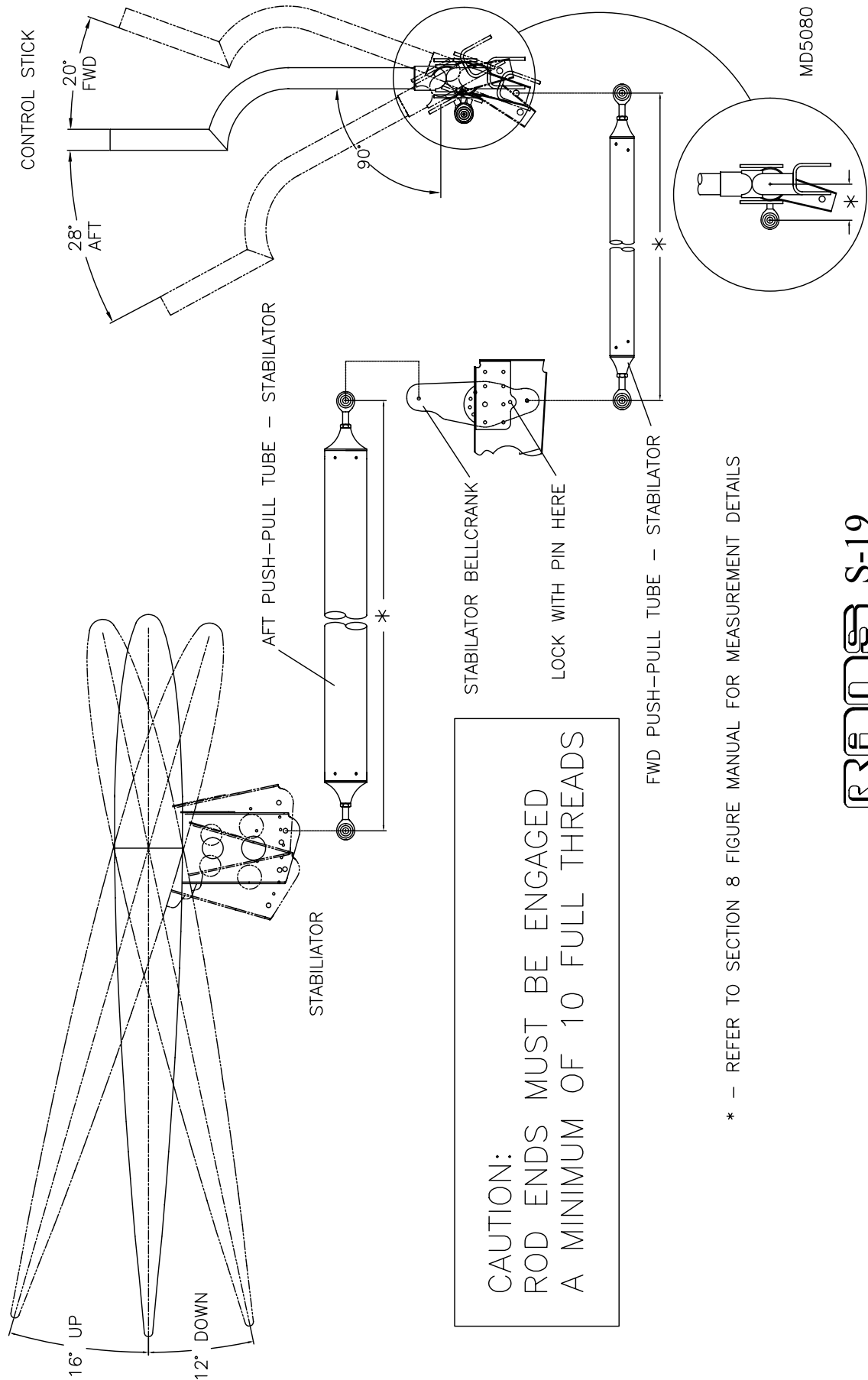
RUDDER PEDALS WILL LINE UP
AT NEUTRAL



MD5080

RANS S-19
RUDDER RIGGING INSTRUCTIONS
FIGURE 15-01

08/15/2007



RAN S-19
STABILATOR RIGGING INSTRUCTIONS
FIGURE 15-02

LEVEL WITH FORWARD
LONGERON OF FUSELAGE

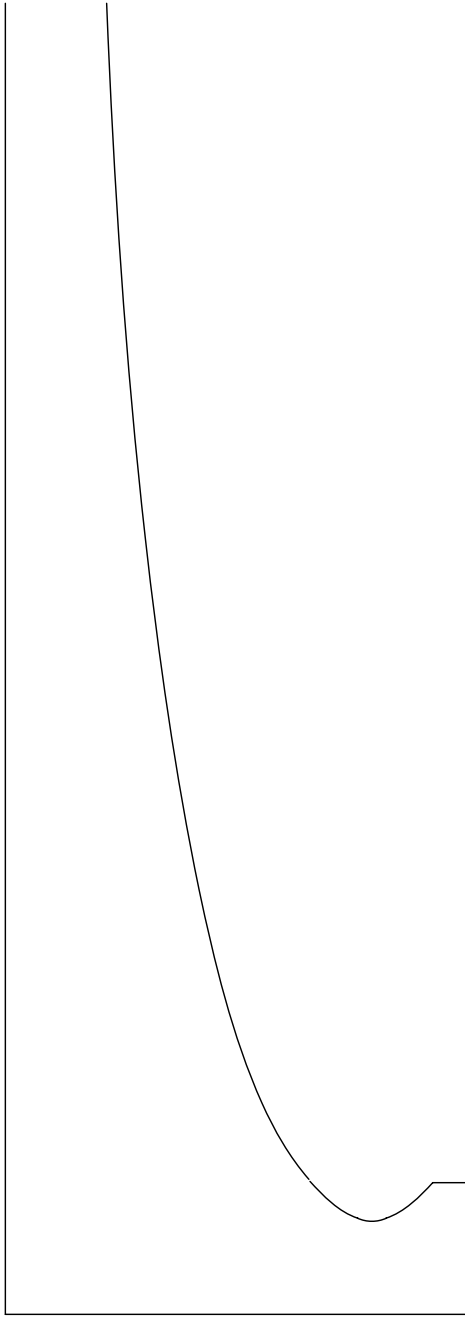
STABILATOR LEVELING JIG



STABILATOR

MD5526

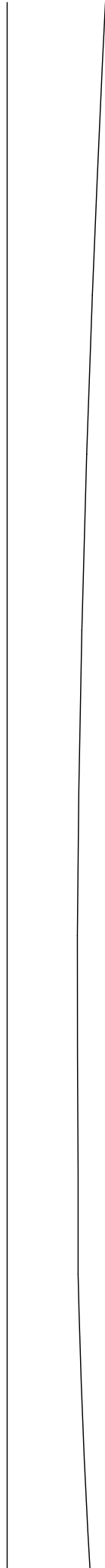
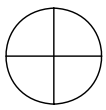
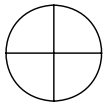
RRANES S-19
STABILATOR LEVELING
FIGURE 15-02A



MD5526

RRR S-19
STABILATOR LEVELING JIG
FIGURE 15-02C

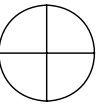
11/03/2010

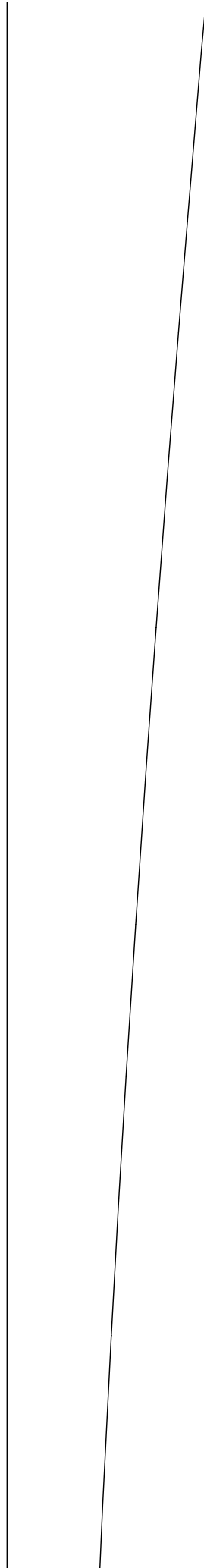
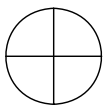
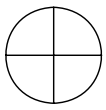


MD5526

RRR S-19
STABILATOR LEVELING JIG
FIGURE 15-02D

11/03/2010

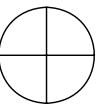


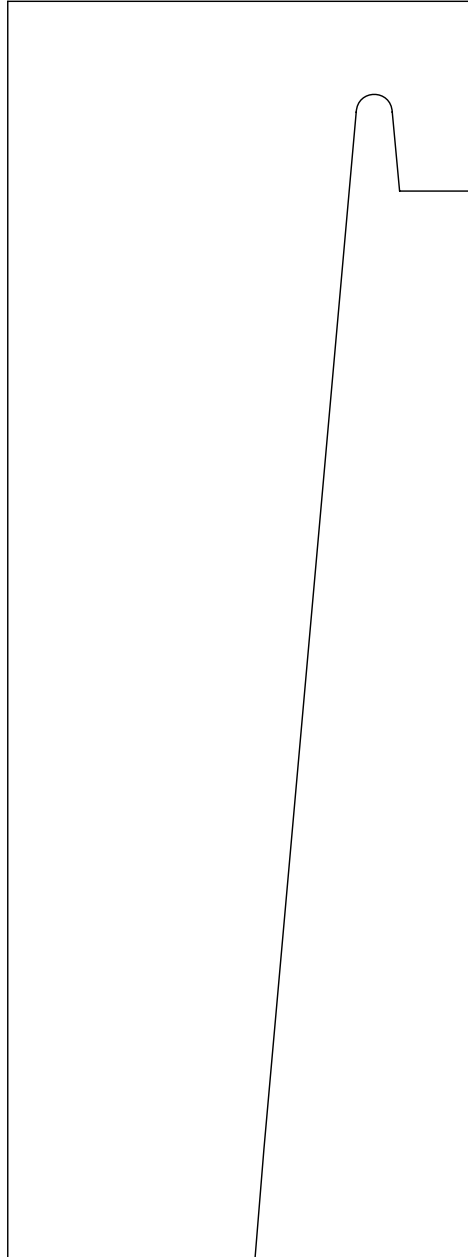
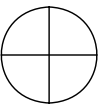
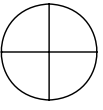


MD5526

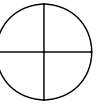
RRR S-19
STABILATOR LEVELING JIG
FIGURE 15-02E

11/03/2010





MD5526



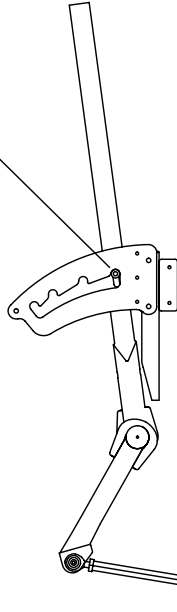
RRANOS S-19
STABILATOR LEVELING JIG
FIGURE 15-02F

11/03/2010



CAUTION:
ROD ENDS MUST BE ENGAGED
A MINIMUM OF 10 FULL THREADS

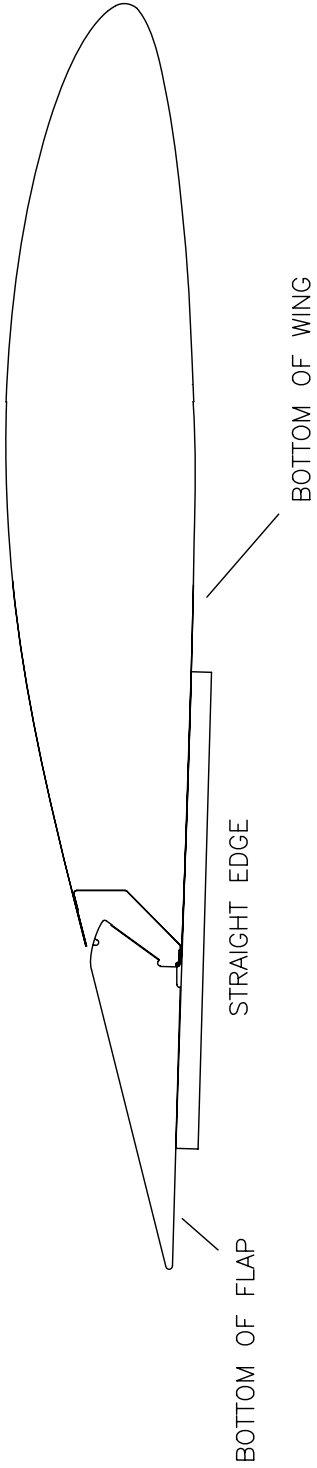
ROLLER BUSHING
ENGAGED IN LOWEST
SLOT



FLAP LEVER

*ADJUST
FLAP PUSH-PULL ROD

*FLAP PUSH-PULL ROD
SHOWN DISCONNECTED
FROM FLAP FOR CLARITY



BOTTOM OF FLAP

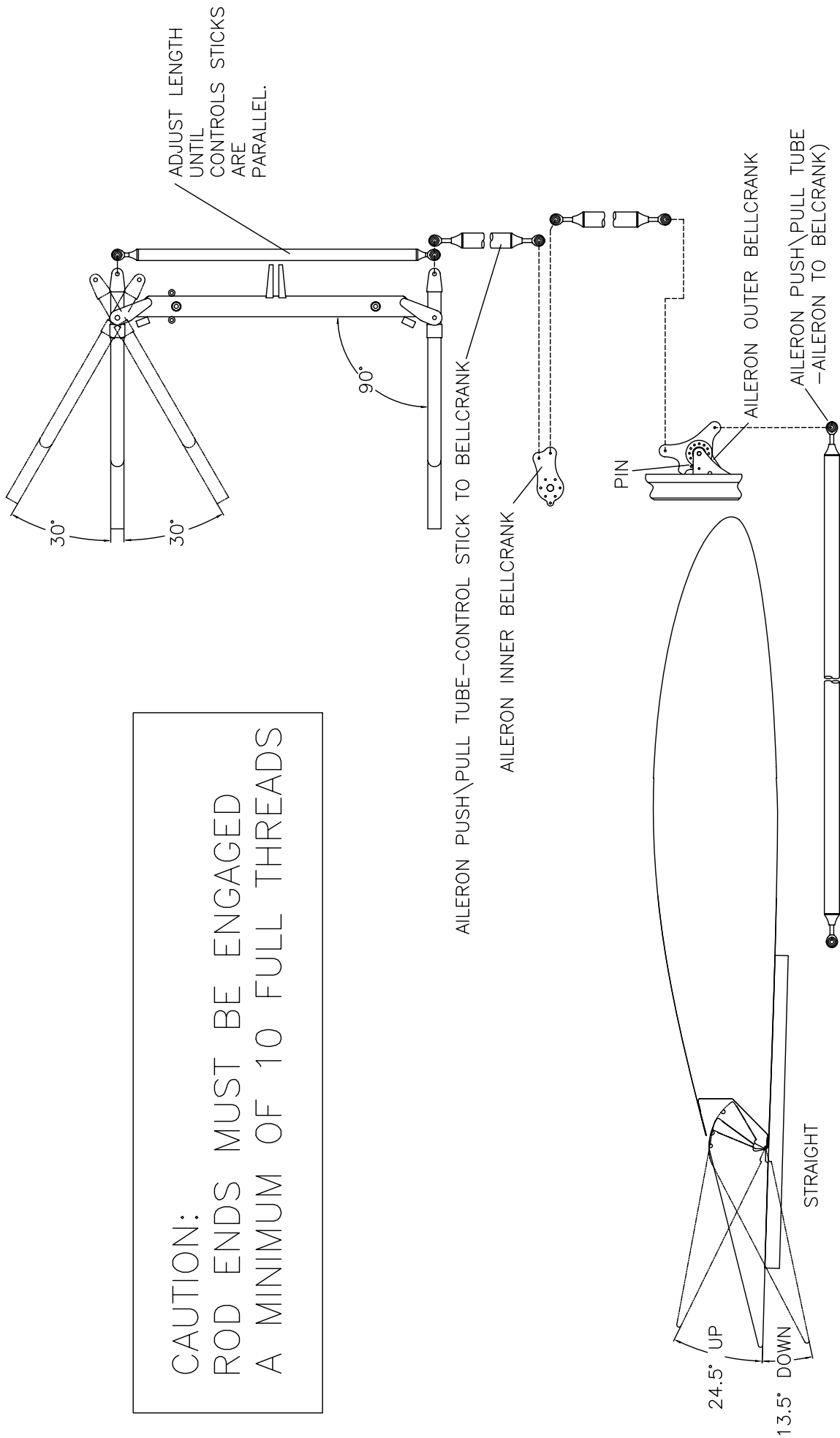
STRAIGHT EDGE

BOTTOM OF WING

MD5080

RAMB S-19 FLAP RIGGING FIGURE 15-04

CAUTION:
 ROD ENDS MUST BE ENGAGED
 A MINIMUM OF 10 FULL THREADS



MD5080

RAMB S-19
AILERON RIGGING
FIGURE 15-05